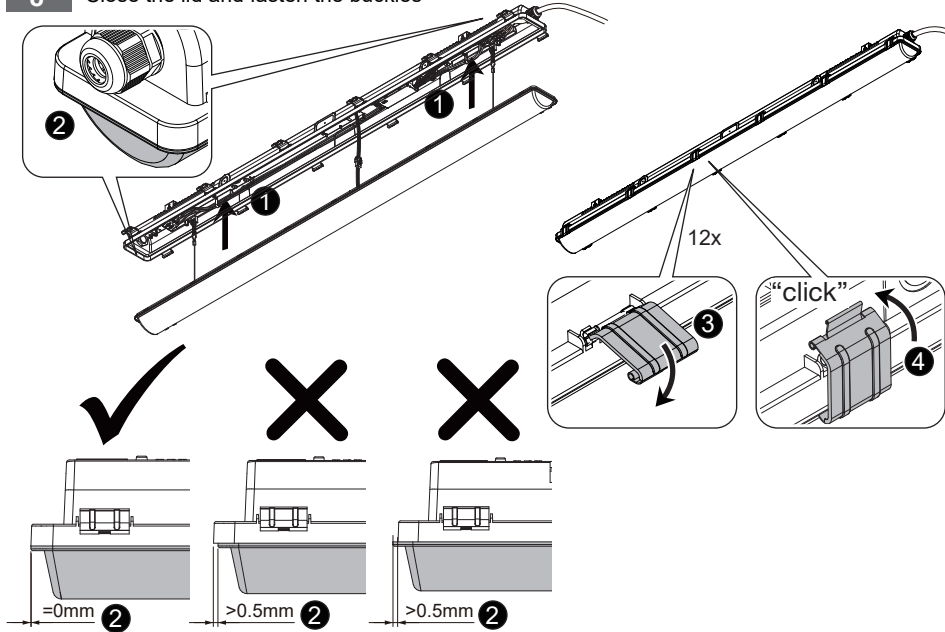


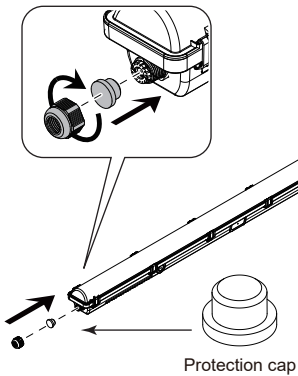
## Installation Steps

### 8 Close the lid and fasten the buckles



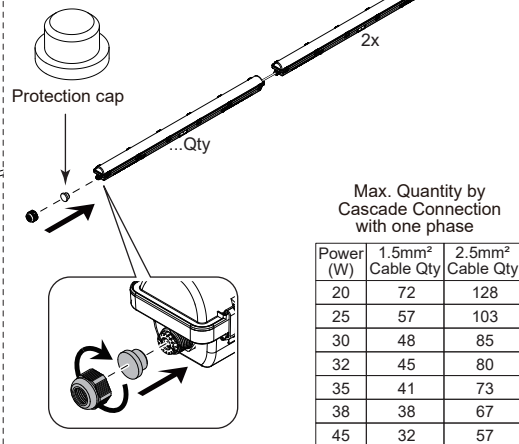
### 9-a Single Luminaire

220-240V



### 9-b Linkable

220-240V



# CALEX Fixum X14K Installation Manual

## IMPORTANT SAFETY NOTES

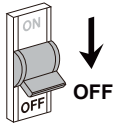


### WARNING

RISK OF ELECTRIC SHOCK

#### BEFORE YOU BEGIN

- Read these instructions completely and carefully.
- The installation and connection of the luminaire must be done when switched off and by qualified people. Make sure no voltage while installation.



### CAUTION

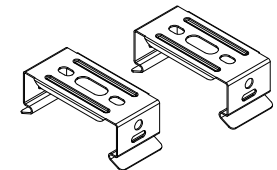
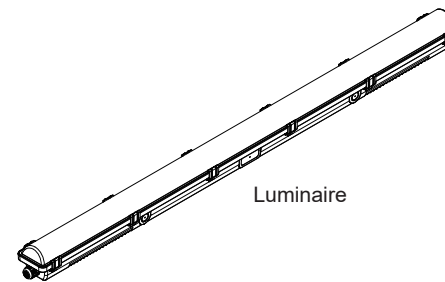
#### MAINTENANCE

- To avoid injuries, disconnect power to the light and allow the unit to cool down before performing maintenance.
- Perform visual, mechanical and electrical inspections on a regular basis. We recommend routine checks to be made on an annual basis. Frequency of use and environment should determine this.
- The Covers should be cleaned periodically as needed to ensure continued photometric performance. Clean the Cover with a damp, non-abrasive, lintfree cloth. If not sufficient, use mild soap or a liquid cleaner. Do not use an abrasive, strong alkaline or acid cleaner as damage may occur.
- Inspect the topside on the luminaire to ensure that it is free of any obstructions or contamination (i.e. excessive dust build-up). Clean with a non-abrasive cloth if needed.

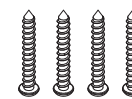


This product contains a light source of energy efficiency class D.

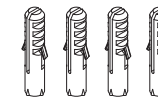
## Products



Mounting Brackets



PA4x30mm



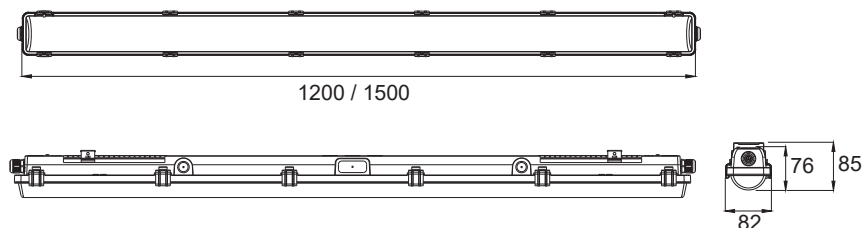
Expansion Tube



Protection cap

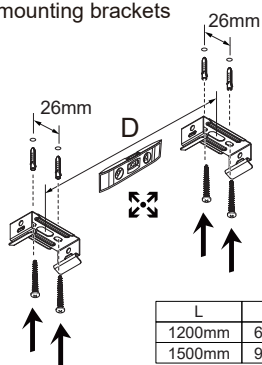
## Dimensions

[ mm ]



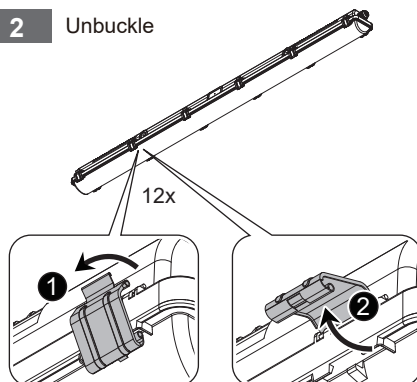
## Installation Steps

### 1 Drill holes and secure the mounting brackets

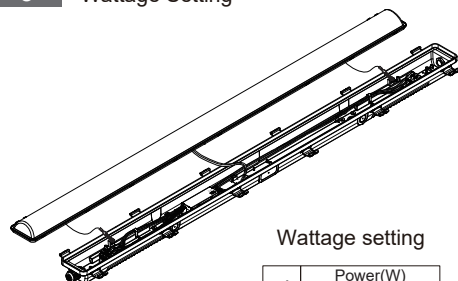


L	D
1200mm	692-1000mm
1500mm	952-1300mm

### 2 Unbuckle



### 3 Wattage Setting

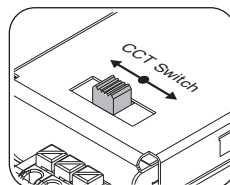


Wattage setting

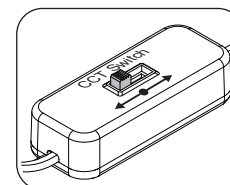
mA	Power(W)
1200mm	1500mm
200	20 25
250	25 32
300	30 38
350	35 45

### 4 CCT Setting (Optional)

CCT Setting (A)  
Dipswitch  
on Driver

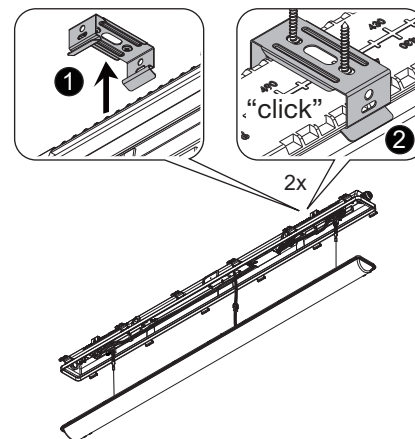


CCT Setting (B)  
External  
DIP switch

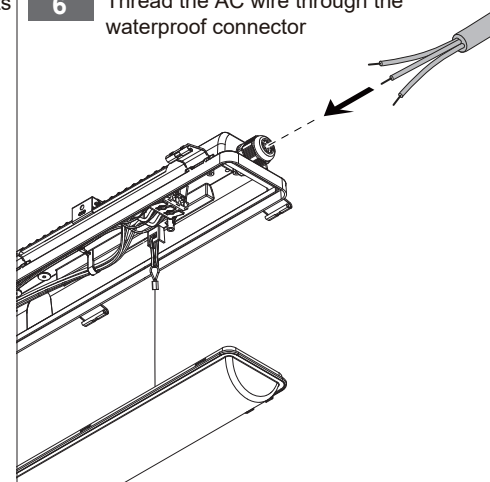


## Installation Steps

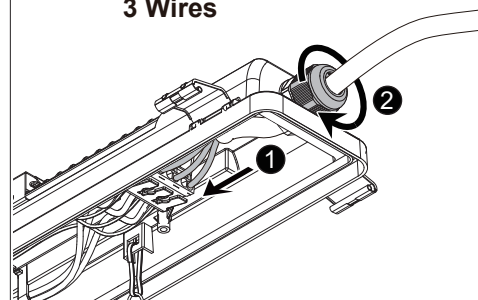
### 5 Fix the luminaire on the mounting brackets



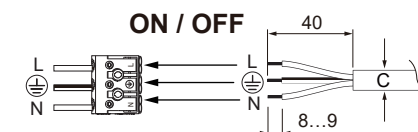
### 6 Thread the AC wire through the waterproof connector



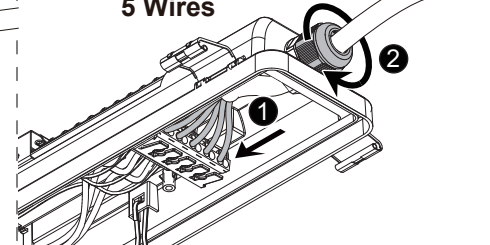
### 7-a Connecting Power Supply 3 Wires



3 Wires specification:  
Outer diameter:  $\varnothing 8\text{mm} \leq C \leq 12\text{mm}$   
Core of cable:  $3 \times 1.5\text{mm}^2$  or  $3 \times 2.5\text{mm}^2$



### 7-b Connecting Power Supply 5 Wires



5 Wires specification:

Outer diameter:  $\varnothing 8\text{mm} \leq C \leq 12\text{mm}$   
Core of cable:  $5 \times 1.5\text{mm}^2$  or  $5 \times 2.5\text{mm}^2$

